

Customize Your Jewelry & Gift Center

This tower is designed to accommodate most of our "popular-priced" jewelry and impulse gifts through the use of display panels, shelves, trays, and a bracket for hanging products.

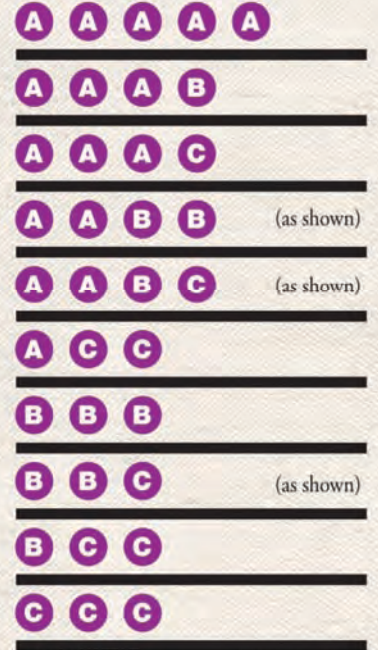
You will see the symbols **A**, **B**, & **C** throughout the catalog.

A = Small Display Panel

B = Medium Display Panel

C = Large Display Panel

The combinations of these panels that can work together on any given side of the tower are as follows:



The symbol *****, which is also shown throughout the catalog, indicates that the product can be displayed on the tower with an alternate panel or accessory as shown at left.

Please ask a sales representative or customer service representative for assistance with your layout and additional customization where necessary.

Tower Accessories

Note:

3 accessories are the equivalent of a **C** panel as shown at left.



DA13
Shelf (unstocked)



DA12
Tray (unstocked)



DA14
Bracket for hanging products (unstocked).



FD607
4-sided revolving floor display
(unstocked fixture).
16" W x 60" H